

# KRI-PH

## PNEUMATIC ROTARY INDEXER KITS

Add rotary indexing capabilities to your laser marking process with our new line of pneumatic rotary indexing kits.

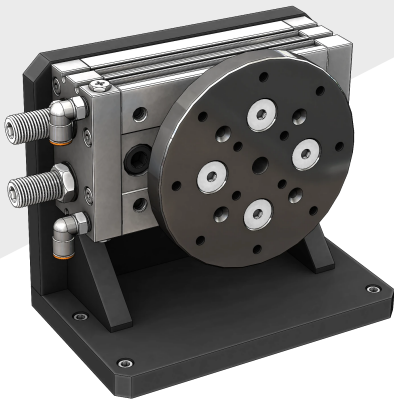
These kits easily integrate into our various enclosures and allow you to mark multiple positions on cylindrical, square or irregularly shaped parts.

Indexing is performed using a two position pneumatic rotary actuator and an included pneumatic selector switch.

### FEATURES

- Two Position Adjustable Pneumatic Rotary Indexer
- Four models for different workholding requirements
- Simple mounting to fixture plate (hardware included)
- Mounts in multiple positions and orientations
- Recommended for use with tall enclosures
- Custom vise jaws and workholding fixtures available

### BASE INDEXER KIT



Model Number: KRI-PH-B

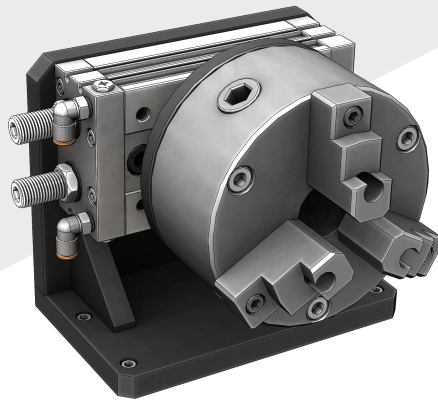
**Price: \$1,970.00**

\*subject to change at any time

The base indexer kit features a blank mount disc with a series of tapped mount holes for attaching your own fixture or workholding device.

- Pneumatic Rotary Indexer (2 Position)
- Adjustable Travel (0 - 190 Degrees)
- (12) 1/4-20 Tapped Mount Holes
- Mount Your Own Fixture or Holder

### CHUCK INDEXER KIT



Model Number: KRI-PH-C

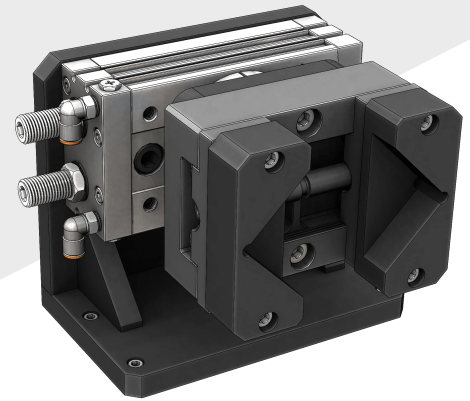
**Price: \$2,680.00**

\*subject to change at any time

The chuck indexer kit includes a precision 3-Jaw Chuck with reversible mounted jaws for holding a variety of round or hexagonal parts.

- Pneumatic Rotary Indexer (2 Position)
- Adjustable Travel (0 - 190 Degrees)
- Steel / Cast Iron 3-Jaw Chuck
- Two Piece Reversible Jaws

### WISE INDEXER KIT



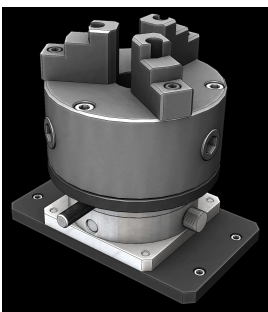
Model Number: KRI-PH-V

**Price: \$2,680.00**

\*subject to change at any time

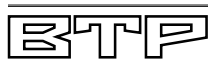
The vise indexer kit is equipped with a versatile self-centering vise with replaceable jaws that can grip square, round, and irregular-shaped parts.

- Pneumatic Rotary Indexer (2 Position)
- Adjustable Travel (0 - 190 Degrees)
- Self-Centering Vise
- Replaceable Jaws (Custom Available)



Vertical Rotary Indexer Kits are also available for laser marking or other applications.

Contact us or visit our website for more information.



**BARNES TECHNICAL PRODUCTS LLC**  
15 HIGH ST. WEST HAVEN, CT 06516

## HOW TO ORDER

To place an order, contact us by phone, email or online form.



(203) 931-8852



[rbarnes@barnestechprod.com](mailto:rbarnes@barnestechprod.com)

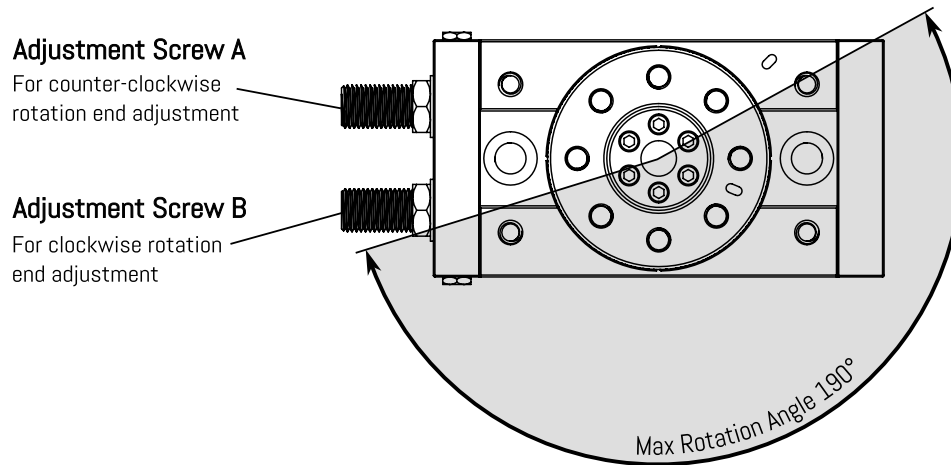


[www.barnestechprod.com/laser-enclosure](http://www.barnestechprod.com/laser-enclosure)

# SYSTEM DESCRIPTION

## INDEXER ADJUSTMENT

Our pneumatic rotary indexer kits use a rotary air actuator to index clockwise and counterclockwise between two positions. The stopping point of both positions can be modified using a set of adjuster screws.

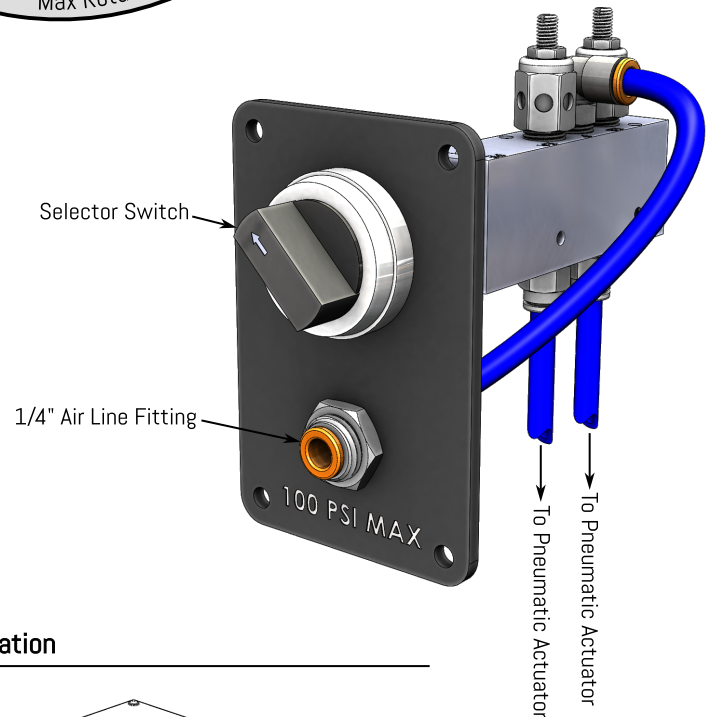


## PNEUMATIC CONTROL

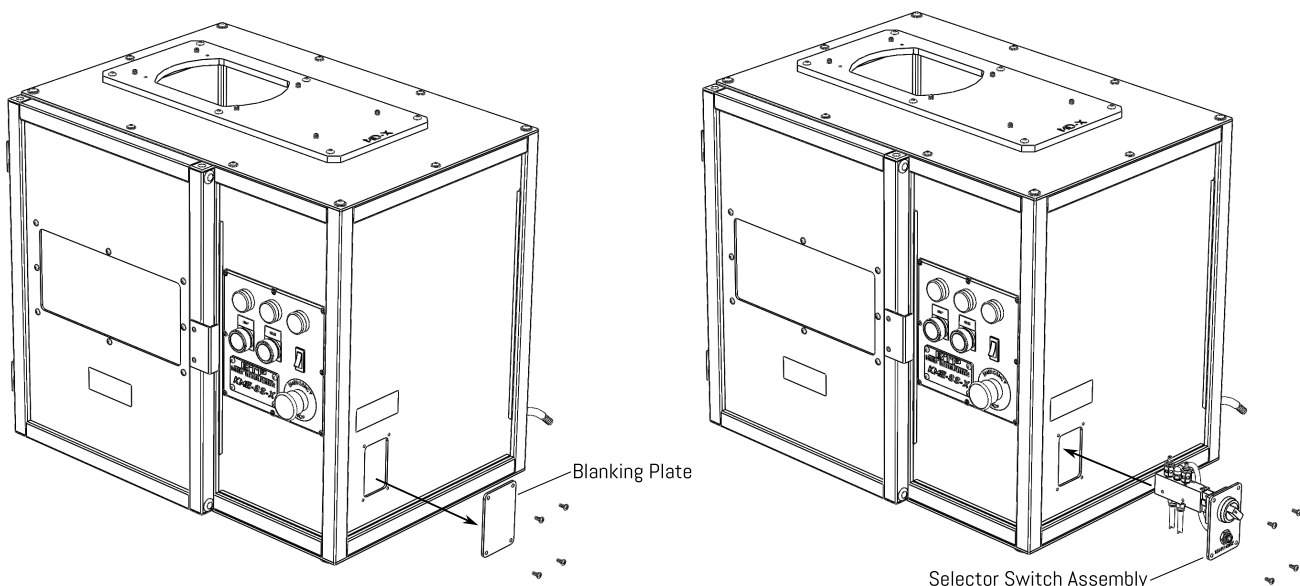
All three of our pneumatic rotary indexer kits come with a selector switch assembly which allows the indexer to be cycled between positions using a switch outside of the enclosure.

The selector switch assembly also has a pneumatic fitting for connecting a 1/4" diameter pressurized air line.

If you already have one of our Standard or Tall enclosures, the selector switch assembly can be added by removing the blanking plate on the right side of the enclosure and installing the selector switch assembly with four screws.



## Selector Switch Assembly Installation



# ENCLOSURE FIT DETAILS

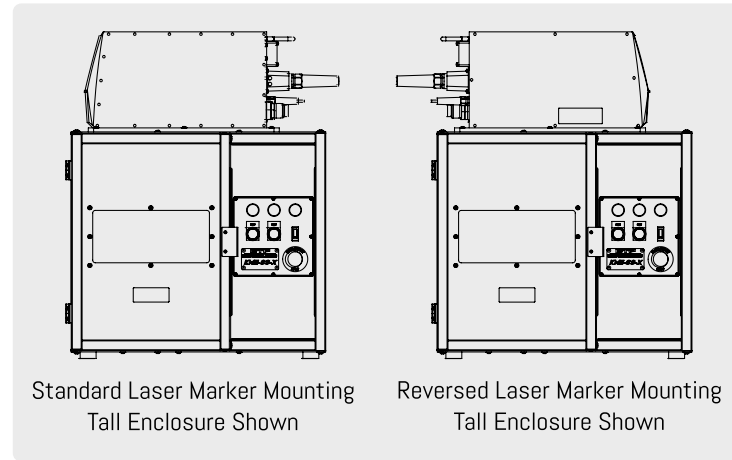
## LASER MOUNT POSITION

The laser marker unit can be mounted in two different positions on top of the laser marker enclosure: the standard mount position and the reversed mount position.

In the standard mount position, the laser marker is installed in its default orientation with the center of the laser marking window aligned with the center of the fixture plate.

The reversed mount position rotates the laser marker 180 degrees, moving the marking window further away from the fixture plate. This configuration is ideal for marking longer parts that cannot fit within the marking window when the laser marker is in the standard position.

\* Diagrams of the different marking window positions shown below

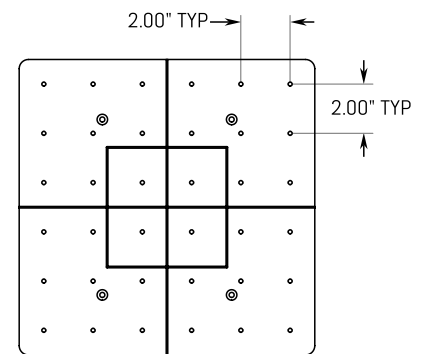


## FIXTURE PLATE MOUNTING

All of our rotary indexer kits can be mounted directly to the laser marking enclosure fixture plate using the included hardware.

The fixture plate features a grid of mount holes spaced 2 inches apart, allowing the indexers to be positioned in a variety of positions and orientations to accommodate different parts and setups.

Additionally, the fixture plate is mounted on top of a scissor jack, enabling vertical adjustment to bring different sized parts within the laser marker's focal zone.

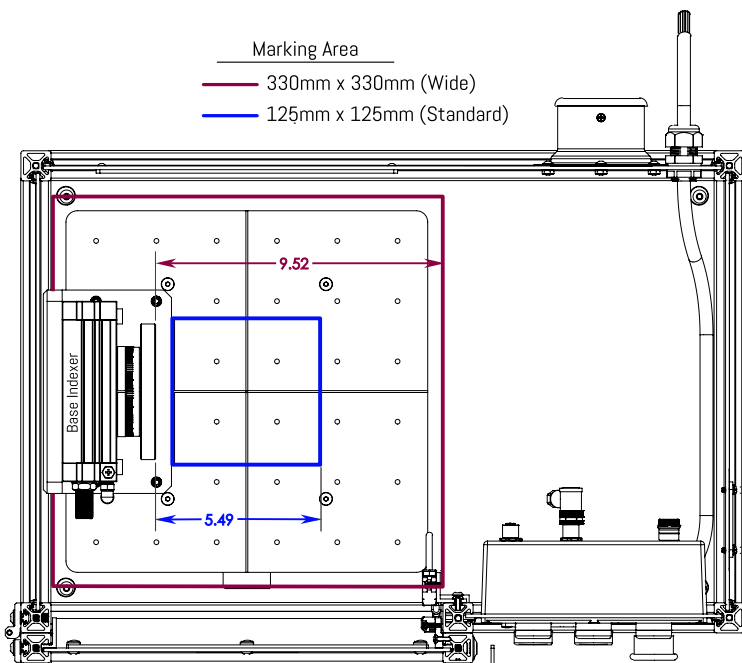


## MARKING AREA DIMENSIONS

### BASE INDEXER KIT STANDARD LASER MOUNT POSITION

\* Dimensions in Inches

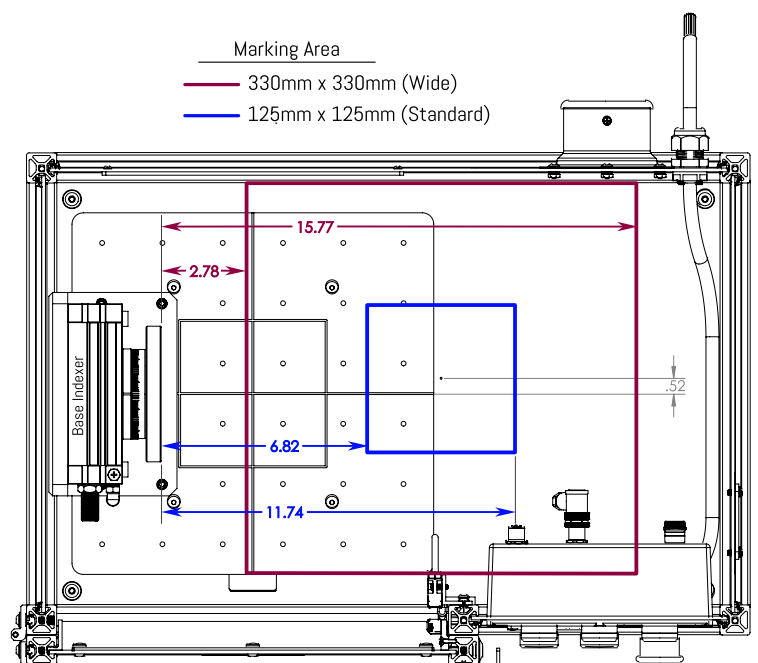
Marking Area  
— 330mm x 330mm (Wide)  
— 125mm x 125mm (Standard)



### BASE INDEXER KIT REVERSE LASER MOUNT POSITION

\* Dimensions in Inches

Marking Area  
— 330mm x 330mm (Wide)  
— 125mm x 125mm (Standard)



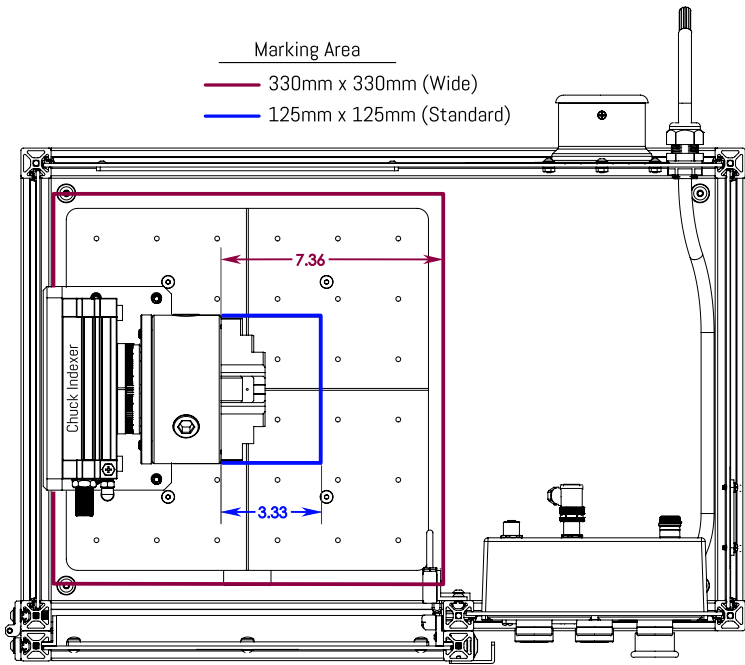
# MARKING AREA DIMENSIONS (CONTINUED)

## CHUCK INDEXER KIT STANDARD LASER MOUNT POSITION

\* Dimensions in Inches

Marking Area

- 330mm x 330mm (Wide)
- 125mm x 125mm (Standard)

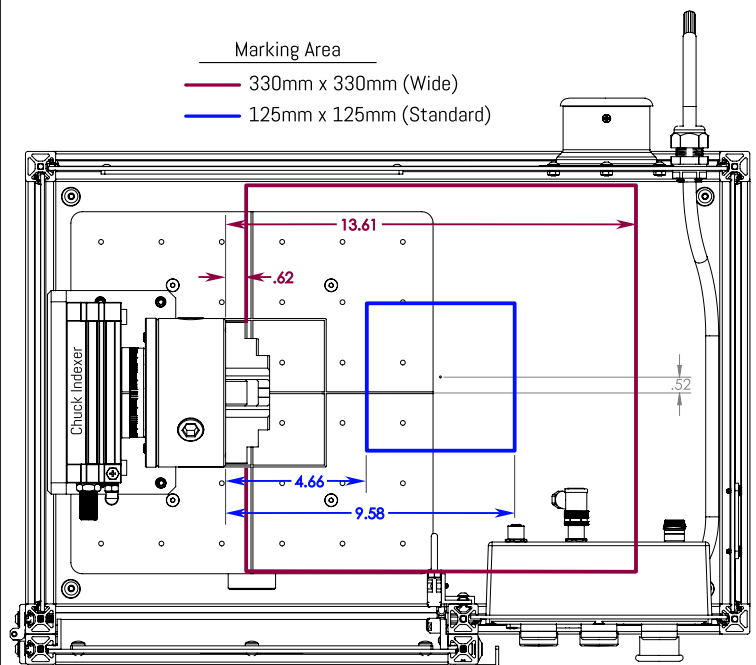


## CHUCK INDEXER KIT REVERSE LASER MOUNT POSITION

\* Dimensions in Inches

Marking Area

- 330mm x 330mm (Wide)
- 125mm x 125mm (Standard)



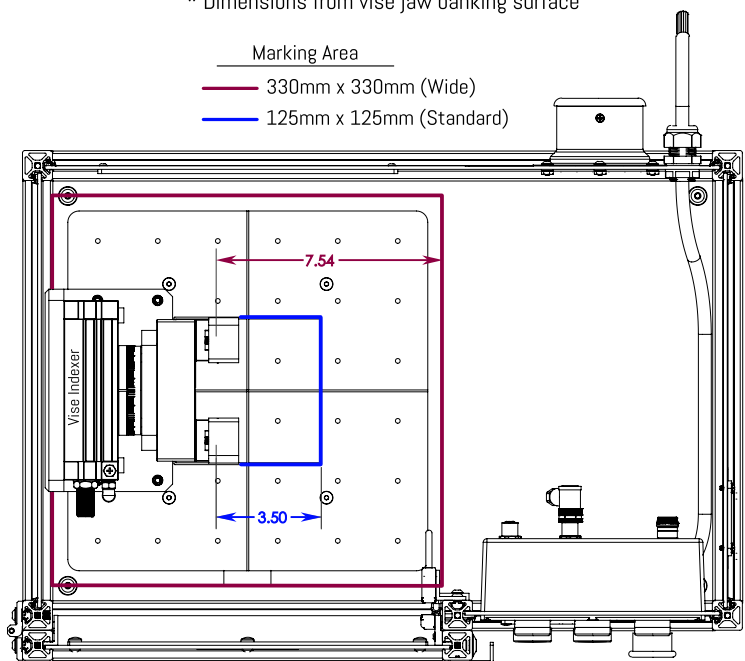
## VISE INDEXER KIT STANDARD LASER MOUNT POSITION

\* Dimensions in Inches

\* Dimensions from vise jaw banking surface

Marking Area

- 330mm x 330mm (Wide)
- 125mm x 125mm (Standard)



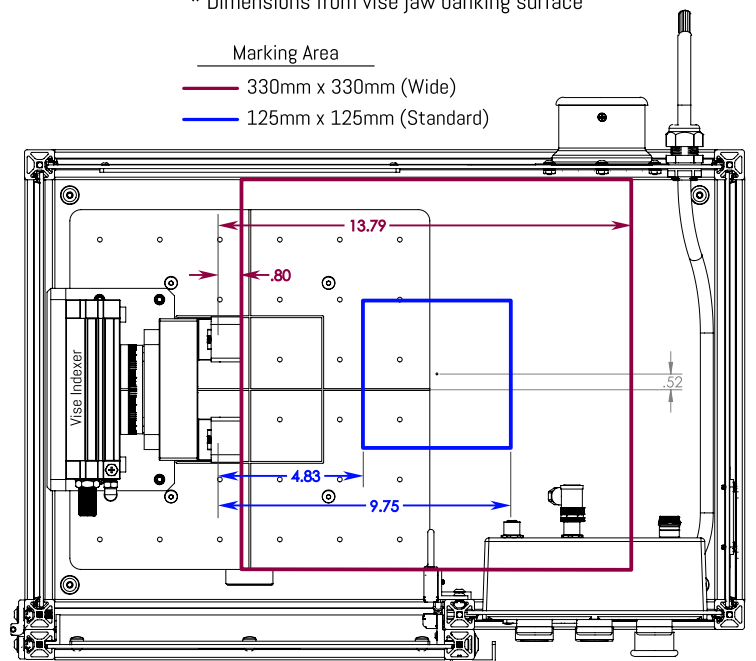
## VISE INDEXER KIT REVERSE LASER MOUNT POSITION

\* Dimensions in Inches

\* Dimensions from vise jaw banking surface

Marking Area

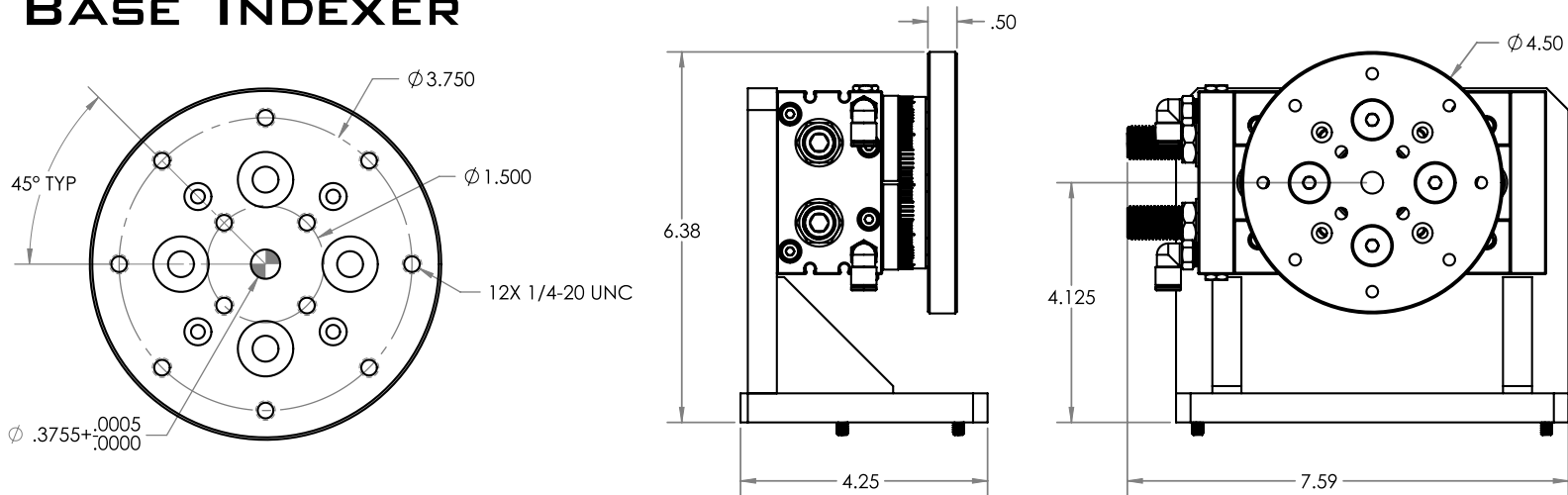
- 330mm x 330mm (Wide)
- 125mm x 125mm (Standard)





# INDEXER SPECIFICATIONS

## BASE INDEXER

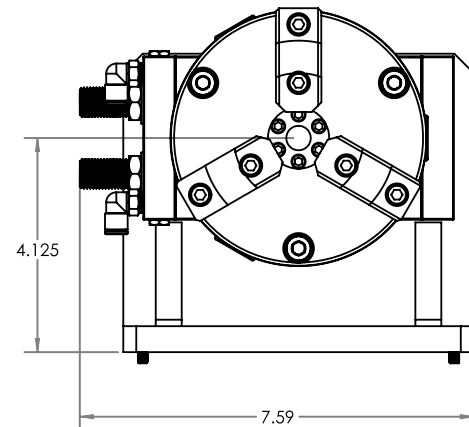
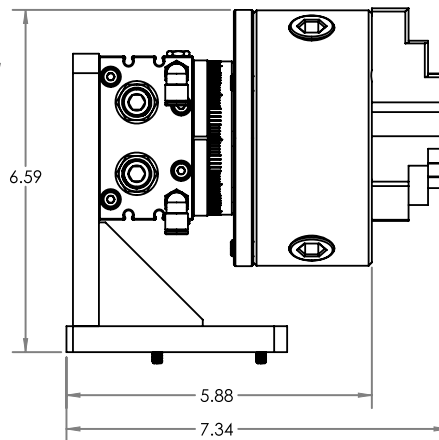
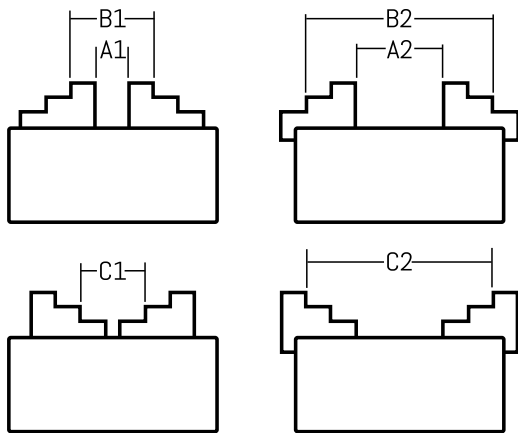


## CHUCK INDEXER

Internal Clamping Range (A1-A2): 0.1" - 1.57"

Jaw Jamming Range (B1-B2): 1.50" - 4.92"

External Clamping Range (C1-C2): 1.50" - 4.33"

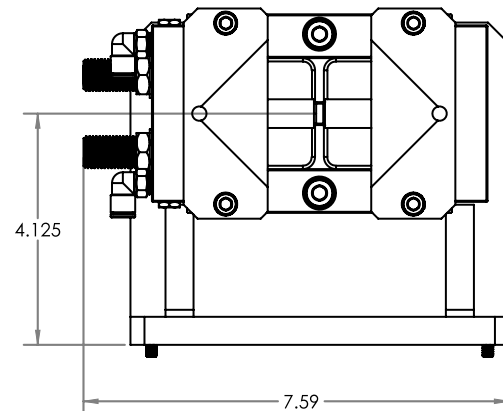
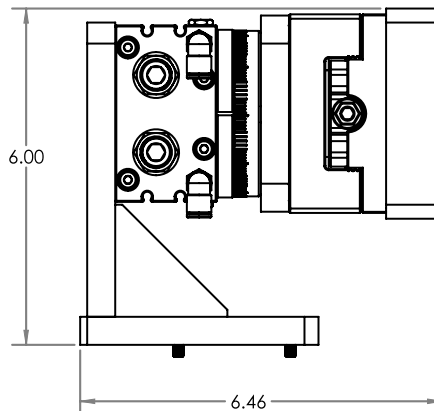
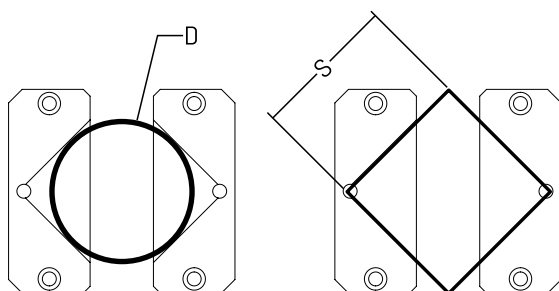


## WISE INDEXER

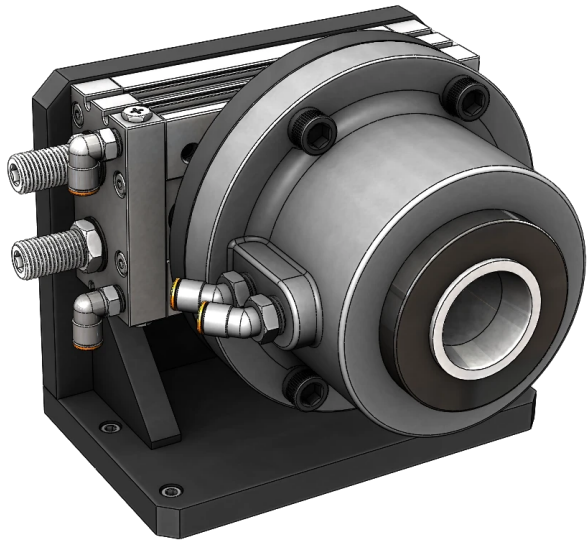
\*Alternate & custom vise jaws available

Circular Clamping Range (D): 1.87" - 3.15"

Square Clamping Range (S): 1.87" - 3.15"



# PNEUMATIC 5C COLLET INDEXER KIT



The Pneumatic 5C Collet Indexer Kit is a rotary indexer system designed for fast, repeatable positioning of round parts up to 1-1/16" in diameter.

This kit features a pneumatically actuated 5C collet chuck for quick loading and unloading, along with two pneumatic switches—one for operating the collet chuck and one for controlling the rotary air cylinder.

It's an ideal solution for applications that require rapid loading / unloading and precise rotation of cylindrical workpieces.

**Model Number:** KRI-PH-5C

**Price:** **\$2,925.00**

\*subject to change at any time

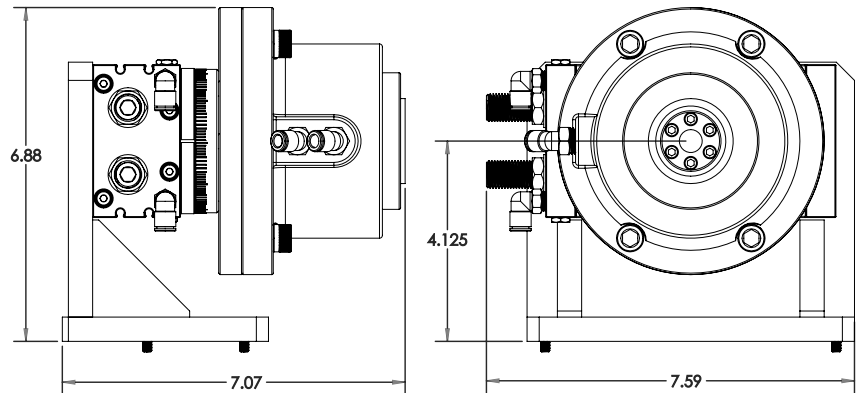
- Pneumatic Rotary Indexer (2 Position)
- Adjustable Travel (0 - 190 Degrees)
- Air-Operated 5C Collet Fixture
- Fits up to 1-1/16" diameter workpieces

\*5C Collets Not Included



This kit includes two pneumatic control switches: one for the rotary actuator and one for the 5C collet chuck, both mounted on the enclosure's right side panel.

## ASSEMBLY DIMENSIONS



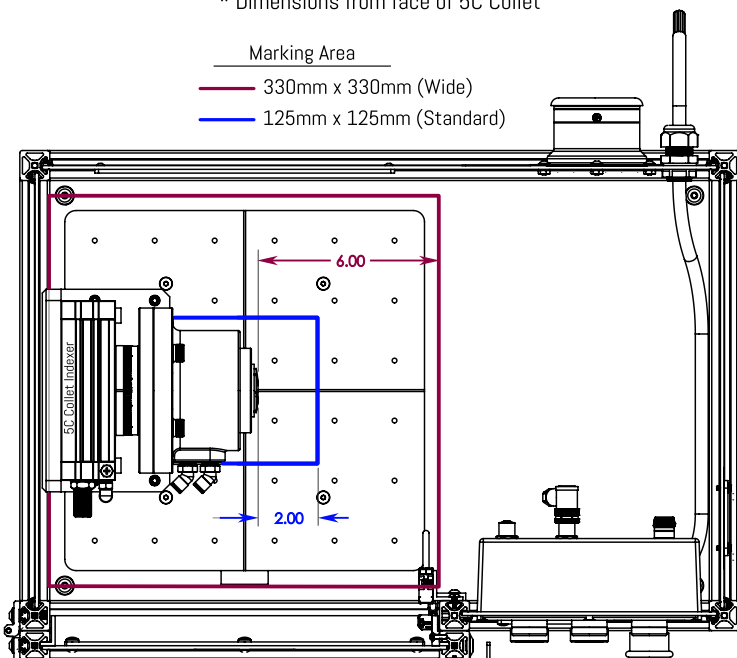
## 5C COLLET INDEXER KIT STANDARD LASER MOUNT POSITION

\* Dimensions in Inches

\* Dimensions from face of 5C Collet

Marking Area

- 330mm x 330mm (Wide)
- 125mm x 125mm (Standard)



## 5C COLLET INDEXER KIT REVERSE LASER MOUNT POSITION

\* Dimensions in Inches

\* Dimensions from face of 5C Collet

Marking Area

- 330mm x 330mm (Wide)
- 125mm x 125mm (Standard)

