

KRI-MH

MANUAL ROTARY INDEXER KITS

Add rotary indexing capabilities to your laser marking process with our new line of manual rotary indexing kits.

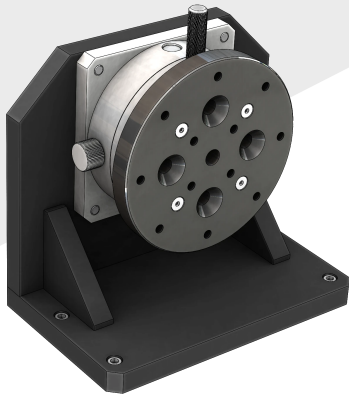
These kits easily integrate into our KME series enclosures and allow you to mark numerous positions on cylindrical, square or irregularly shaped parts.

Indexing is performed manually, with the indexer position rotated by hand and locked using a thumb screw.

FEATURES

- Manual Rotary Indexer with twelve 30 degree increments
- Three models for different workholding requirements
- Simple mounting to fixture plate (hardware included)
- Mounts in multiple positions and orientations
- Recommended for use with tall enclosures
- Custom vise jaws and workholding fixtures available

BASE INDEXER KIT



Model Number: KRI-MH-B

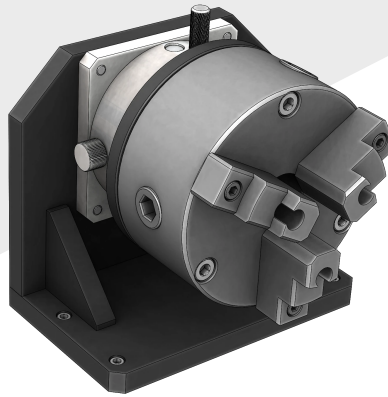
Price: \$1,600.00

*subject to change at any time

The base indexer kit features a blank mount disc with a series of tapped mount holes for attaching your own fixture or workholding device.

- Manual Rotary Indexer
- 30 Degree Index Increments
- (12) 1/4-20 Tapped Mount Holes
- Mount Your Own Fixture or Holder

CHUCK INDEXER KIT



Model Number: KRI-MH-C

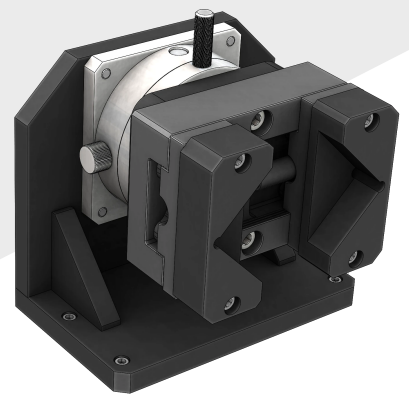
Price: \$2,350.00

*subject to change at any time

The chuck indexer kit includes a precision 3-Jaw Chuck with reversible mounted jaws for holding a variety of round or hexagonal parts.

- Manual Rotary Indexer
- 30 Degree Index Increments
- Steel / Cast Iron 3-Jaw Chuck
- Two Piece Reversible Jaws

VISE INDEXER KIT



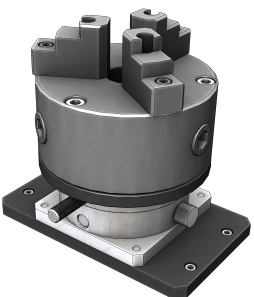
Model Number: KRI-MH-V

Price: \$2,350.00

*subject to change at any time

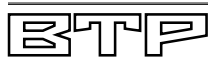
The vise indexer kit is equipped with a versatile self-centering vise with replaceable jaws that can grip square, round, and irregular-shaped parts.

- Manual Rotary Indexer
- 30 Degree Index Increments
- Self-Centering Vise
- Replaceable Jaws (Custom Available)



Vertical Rotary Indexer Kits are also available for laser marking or other applications.

Contact us or visit our website for more information.



BARNES TECHNICAL PRODUCTS LLC
15 HIGH ST. WEST HAVEN, CT 06516

HOW TO ORDER

To place an order, contact us by phone, email or online form.



(203) 931-8852



rbarnes@barnestechprod.com



www.barnestechprod.com/laser-enclosure

ENCLOSURE FIT DETAILS

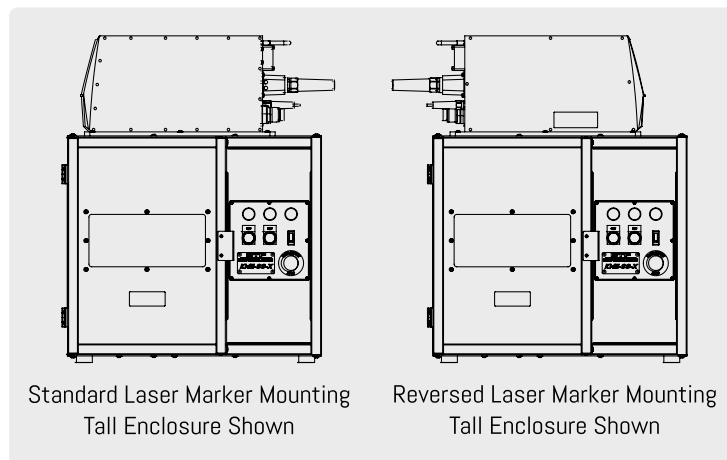
LASER MOUNT POSITION

The laser marker unit can be mounted in two different positions on top of the laser marker enclosure: the standard mount position and the reversed mount position.

In the standard mount position, the laser marker is installed in its default orientation with the center of the laser marking window aligned with the center of the fixture plate.

The reversed mount position rotates the laser marker 180 degrees, moving the marking window further away from the fixture plate. This configuration is ideal for marking longer parts that cannot fit within the marking window when the laser marker is in the standard position.

* Diagrams of the different marking window positions shown below

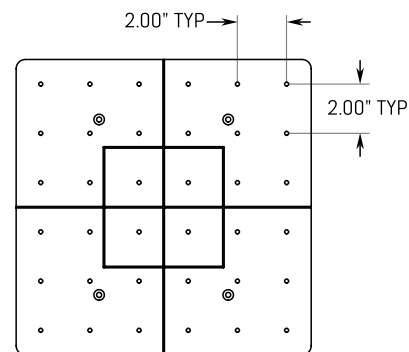


FIXTURE PLATE MOUNTING

All of our rotary indexer kits can be mounted directly to the laser marking enclosure fixture plate using the included hardware.

The fixture plate features a grid of mount holes spaced 2 inches apart, allowing the indexers to be positioned in a variety of positions and orientations to accommodate different parts and setups.

Additionally, the fixture plate is mounted on top of a scissor jack, enabling vertical adjustment to bring different sized parts within the laser marker's focal zone.

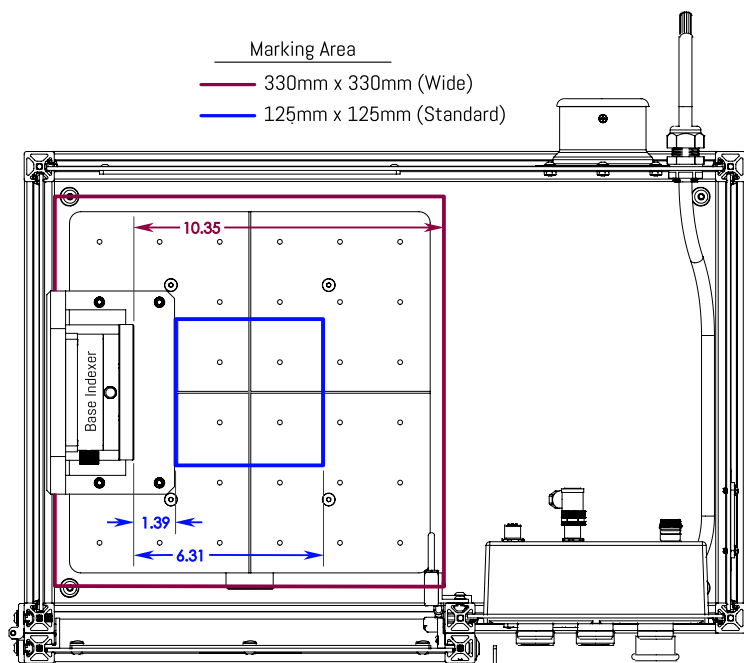


MARKING AREA DIMENSIONS

BASE INDEXER KIT STANDARD LASER MOUNT POSITION

* Dimensions in Inches

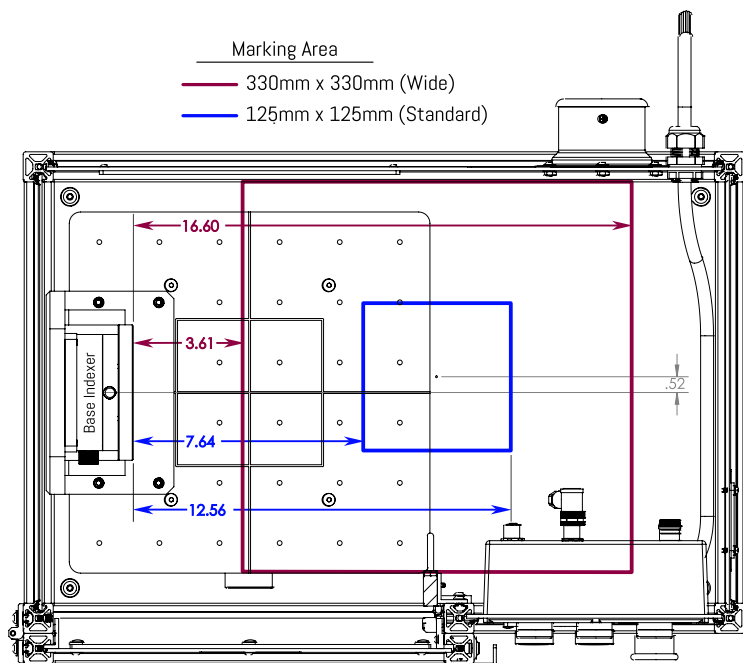
Marking Area
— 330mm x 330mm (Wide)
— 125mm x 125mm (Standard)



BASE INDEXER KIT REVERSE LASER MOUNT POSITION

* Dimensions in Inches

Marking Area
— 330mm x 330mm (Wide)
— 125mm x 125mm (Standard)



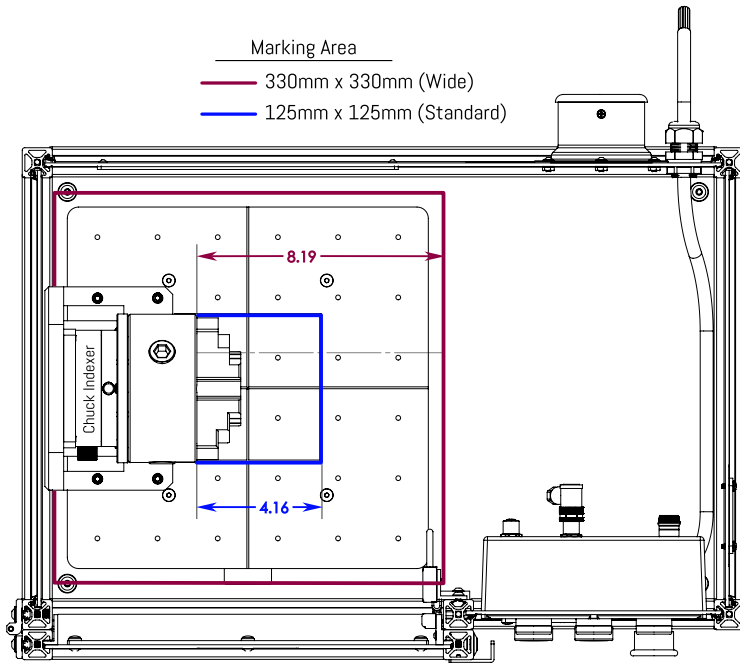
MARKING AREA DIMENSIONS (CONTINUED)

CHUCK INDEXER KIT STANDARD LASER MOUNT POSITION

* Dimensions in Inches

Marking Area

- 330mm x 330mm (Wide)
- 125mm x 125mm (Standard)

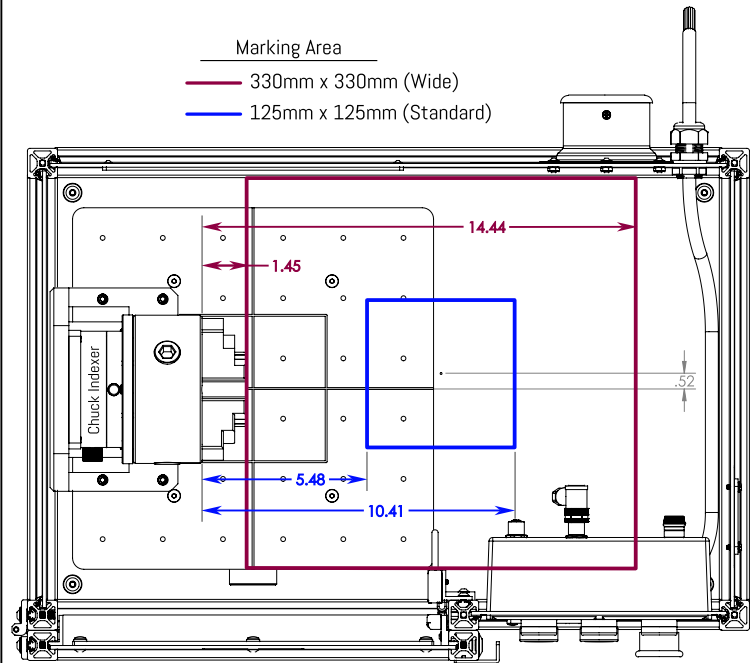


CHUCK INDEXER KIT REVERSE LASER MOUNT POSITION

* Dimensions in Inches

Marking Area

- 330mm x 330mm (Wide)
- 125mm x 125mm (Standard)



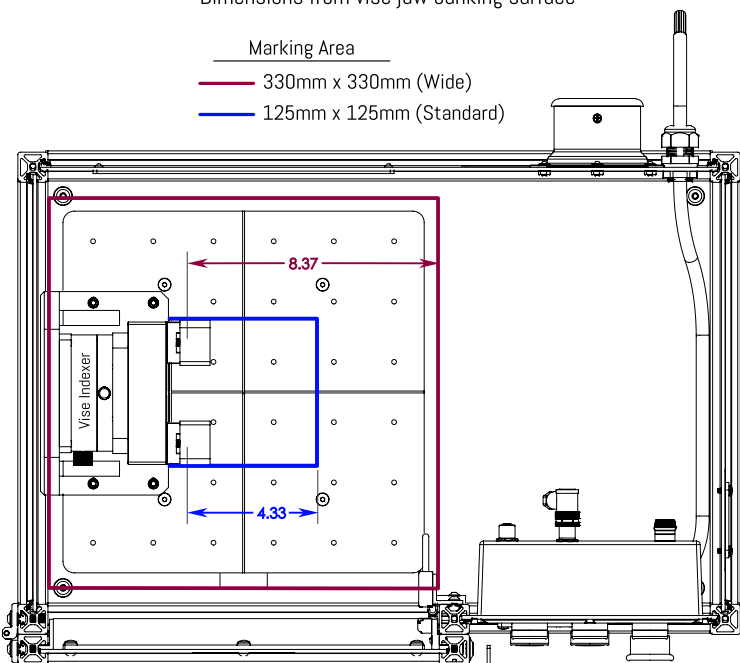
VISE INDEXER KIT STANDARD LASER MOUNT POSITION

* Dimensions in Inches

* Dimensions from vise jaw banking surface

Marking Area

- 330mm x 330mm (Wide)
- 125mm x 125mm (Standard)



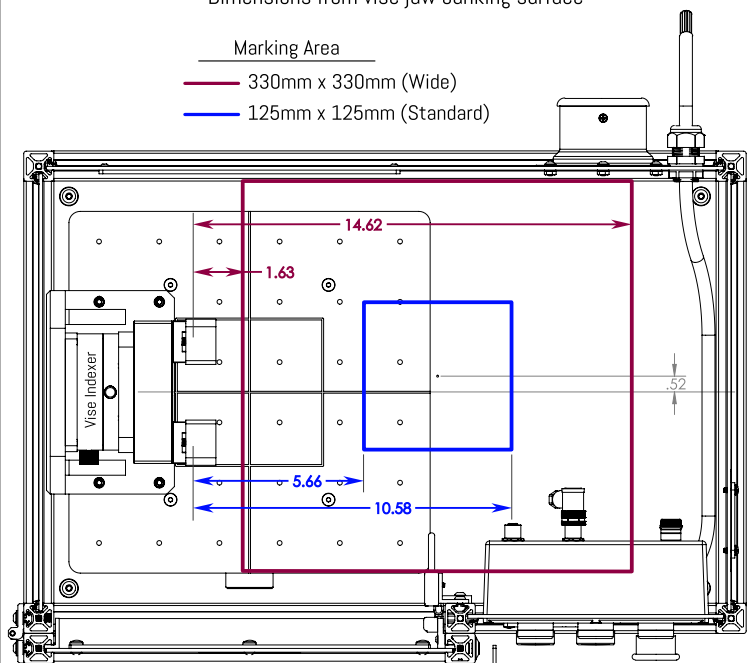
VISE INDEXER KIT REVERSE LASER MOUNT POSITION

* Dimensions in Inches

* Dimensions from vise jaw banking surface

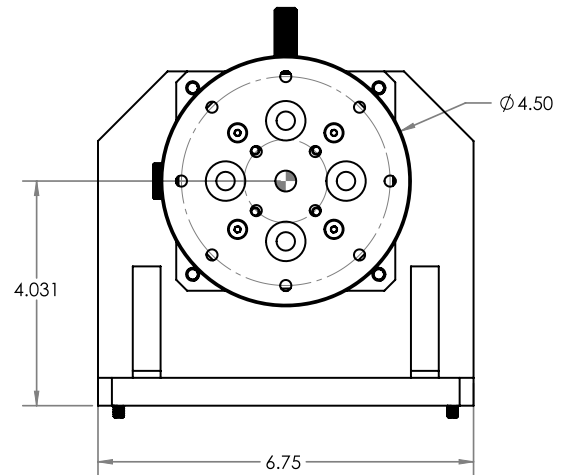
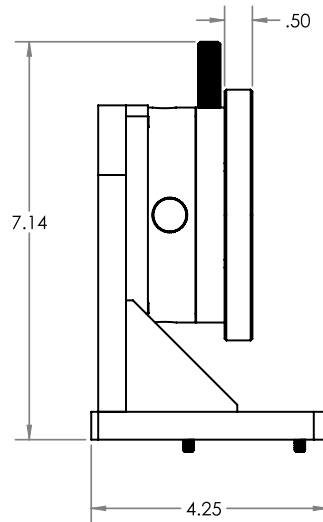
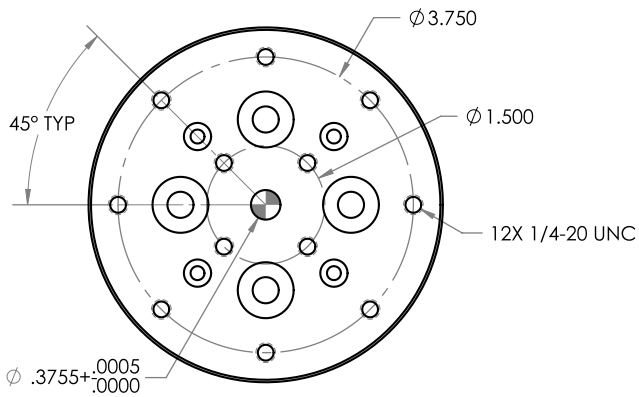
Marking Area

- 330mm x 330mm (Wide)
- 125mm x 125mm (Standard)



INDEXER SPECIFICATIONS

BASE INDEXER

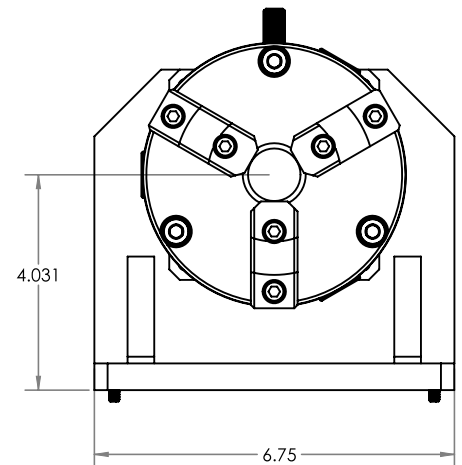
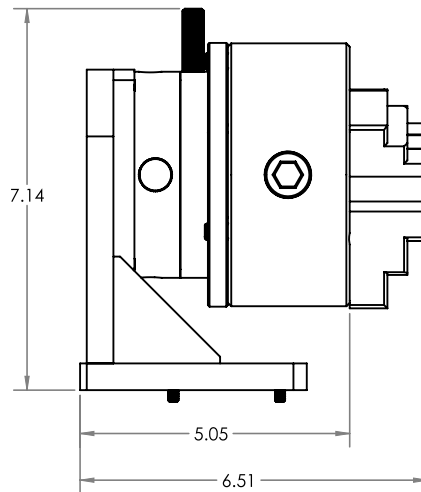
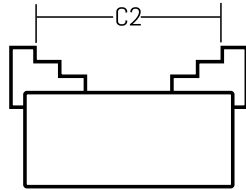
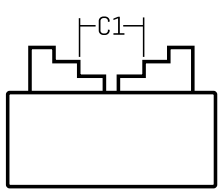
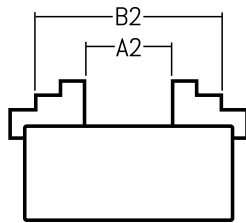
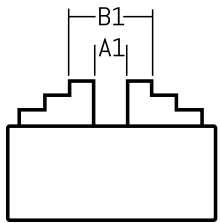


CHUCK INDEXER

Internal Clamping Range (A1-A2): 0.1" - 1.57"

Jaw Jamming Range (B1-B2): 1.50" - 4.92"

External Clamping Range (C1-C2): 1.50" - 4.33"



WISE INDEXER

*Alternate & custom vise jaws available

Circular Clamping Range (D): 1.87" - 3.15"

Square Clamping Range (S): 1.87" - 3.15"

